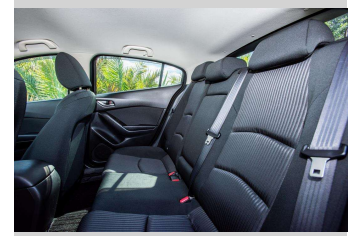
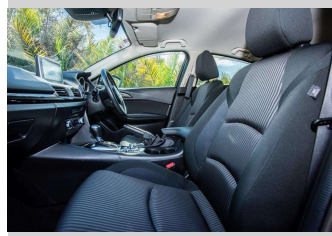
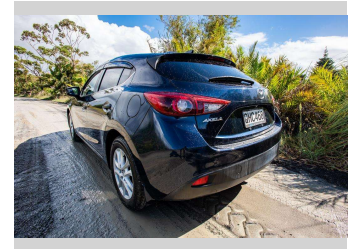
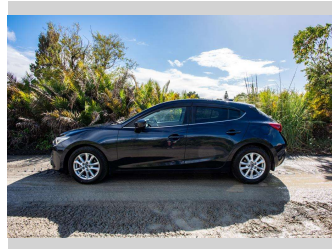


2014 Mazda Axela 1.5 S



Purchase Price

\$18,500

Includes GST, Registration & Licensing

Finance may be available on this vehicle. Ask one of our friendly staff for more information.

Gain peace of mind with Mechanical Breakdown Insurance. **Ask us how.**

Top features

- » ABS Braking
- » Air Conditioning
- » Blue tooth
- » Car Alarm
- » Central Locking
- » Child seat anchor poin...
- » Climate Control
- » cruise control
- » Digital Display
- » Electric Mirrors
- » Electric Mirrors (Retr...
- » Face Lift Model
- » Push Button Start
- » Smart Key

Body Style

5 door, Hatchback

Odometer

111,717 km

Engine

1496 cc

Fuel Type

Petrol

Transmission

automatic

Wheels

Factory Alloys

VIN

7AT0C13JX23112387

Interior

Cloth

Safety



Based on 2023 UCSR rating for 13-19 models

Reg No.

QHC468

Ext Colour

Blue

History

Ex-Overseas

Seats

5 seats, Cloth

CO2 Emissions

★★★★☆

146 grams/km

Energy Economy

★★★★☆☆

Annual fuel cost of \$2,390

6.1L per 100km

Cost per year is an estimate based on petrol price of \$2.80 per litre and an average distance of 14000 km. Emissions and Energy Economy figures standardised to 3P WLTP.

Stock ID: 7830



Ray Scragg Motors Ltd | Phone 06 867 7947 | Email
rayscraggmotors@xtra.co.nz
265 Grey Street, Gisborne, New Zealand



★★★★★
4.93 | 1000 reviews