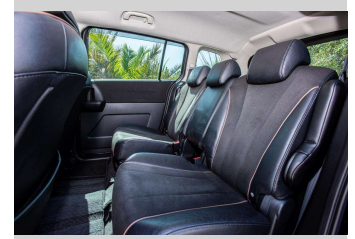
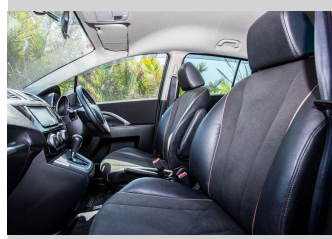
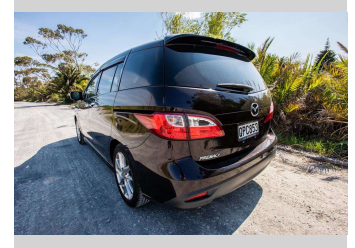


# 2012 Mazda Premacy 20S



Purchase Price

**\$13,500**

Includes GST, Registration & Licensing

Finance may be available on this vehicle. Ask one of our friendly staff for more information.

Gain peace of mind with Mechanical Breakdown Insurance. **Ask us how.**

## Top features

- » ABS Braking
- » Air Conditioning
- » Blue tooth
- » Car Alarm
- » Central Locking
- » Child seat anchor poin...
- » Climate Control
- » Digital Display
- » Electric Mirrors
- » Electric Mirrors (Retr...
- » Smart Key

Body Style

**5 door, Station Wagon**

Odometer

**138,319 km**

Engine

**1998 cc**

Fuel Type

**Petrol**

Transmission

**automatic**

Wheels

**Factory Alloys**

VIN

**7AT0C133X24147157**

Interior

**Cloth**

Safety



Based on 2023 VSRR rating

Reg No.

**QPC853**

Ext Colour

**PURPLE**

History

**Ex-Overseas**

Seats

**7 seats, Cloth**

CO2 Emissions

★★★★☆

**190 grams/km**

Energy Economy

★★☆☆☆☆

**Annual fuel cost of \$3,100**

**7.9L per 100km**

Cost per year is an estimate based on petrol price of \$2.80 per litre and an average distance of 14000 km. Emissions and Energy Economy figures standardised to 3P WLTP.

**Stock ID: 8072**



Ray Scragg Motors Ltd | Phone 06 867 7947 | Email  
rayscraggmotors@xtra.co.nz  
265 Grey Street, Gisborne, New Zealand



★★★★★  
4.93 | 1035 reviews