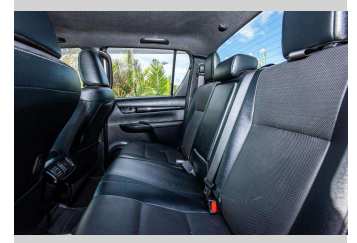
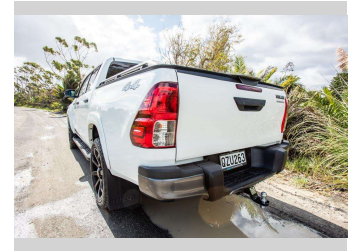
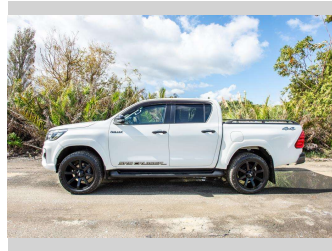


2019 Toyota Hilux SR5 Cruiser TD DC 2.



Purchase Price **\$43,500**
Includes GST, Registration & Licensing

Finance may be available on this vehicle. Ask one of our friendly staff for more information.

Gain peace of mind with Mechanical Breakdown Insurance. **Ask us how.**

- Top features**
- » Air Conditioning
 - » Blue tooth
 - » Car Alarm
 - » Central Locking
 - » Child seat anchor poin...
 - » Climate Control
 - » cruise control
 - » Digital Display
 - » Electric Mirrors
 - » Electric Mirrors (Retr...
 - » Push Button Start
 - » Reverse camera
 - » Running Boards
 - » Smart Key
 - » T Custom Hard Lid

Body Style
4 door, Ute

Odometer
214,044 km

Engine
2755 cc, Internal Combustion

Fuel Type
Diesel

Transmission
automatic, 4WD

Wheels
20 " Alloys

VIN
MR0HA3CD700430495

Interior
Leather

Safety



Based on 2024 UCSR rating for 15-19 models

Reg No.
QZU263

Ext Colour
White

History
NZ New

Seats
5 seats, Leather

CO2 Emissions
★ ★ ☆ ☆ ☆ ☆ ☆
252 grams/km

Energy Economy
★ ★ ☆ ☆ ☆ ☆ ☆

Annual fuel cost of \$3,750
9.6L per 100km

Cost per year is an estimate based on diesel price of \$2.00 per litre and an average distance of 14000 km. Includes Road User Charges (RUC). Emissions and Energy Economy figures standardised to 3P WLTP.

Stock ID: 8458



Ray Scragg Motors Ltd | Phone 06 867 7947 | Email rayscraggmotors@xtra.co.nz
265 Grey Street, Gisborne, New Zealand

