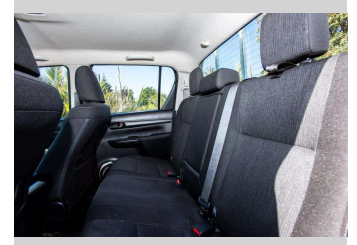
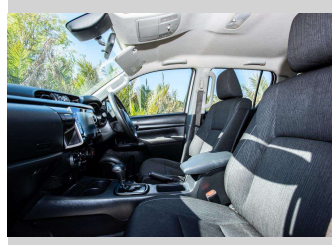
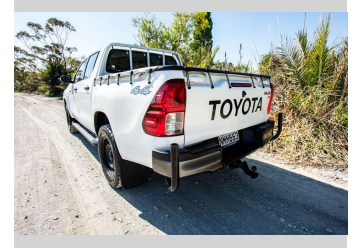


# 2021 Toyota Hilux SR TD DC 2.8DT/4WD



Purchase Price

**\$40,500**

Includes GST, Registration & Licensing

Finance may be available on this vehicle. Ask one of our friendly staff for more information.

Gain peace of mind with Mechanical Breakdown Insurance. **Ask us how.**

## Top features

- » ABS Braking
- » Air Conditioning
- » Blue tooth
- » Car Alarm
- » Central Locking
- » Child seat anchor poin...
- » Climate Control
- » cruise control
- » Digital Display
- » Electric Mirrors
- » Electric Mirrors (Retr...
- » Face Lift Model
- » Reverse camera
- » Running Boards
- » Smart Key
- » tuff-deck

Body Style

**4 door, Ute**

Odometer

**221,135 km**

Engine

**2755 cc, Internal Combustion**

Fuel Type

**Diesel**

Transmission

**automatic, 4WD**

Wheels

-

VIN

**MR0KA3CD801258025**

Interior

**Cloth**

Safety



Based on 2019 ANCAP rating for 19+ models

Reg No.

**NMH663**

Ext Colour

**White**

History

**NZ New**

Seats

**5 seats, Cloth**

CO2 Emissions

★ ★ ☆ ☆ ☆ ☆

**238 grams/km**

Energy Economy

★ ★ ☆ ☆ ☆ ☆

**Annual fuel cost of \$3,610**

**9.1L per 100km**

Cost per year is an estimate based on diesel price of \$2.00 per litre and an average distance of 14000 km. Includes Road User Charges (RUC). Emissions and Energy Economy figures standardised to 3P WLTP.

**Stock ID: 8207**



Ray Scragg Motors Ltd | Phone 06 867 7947 | Email  
rayscraggmotors@xtra.co.nz  
265 Grey Street, Gisborne, New Zealand



★★★★★  
4.93 | 1051 reviews